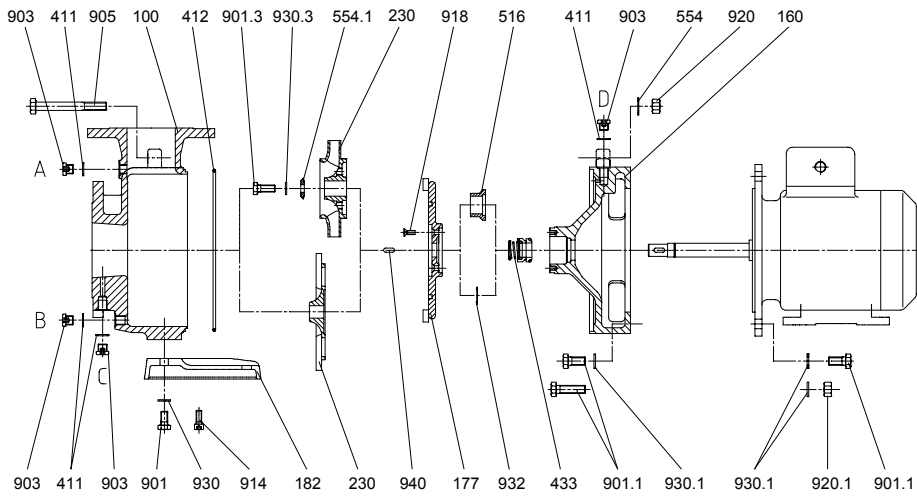


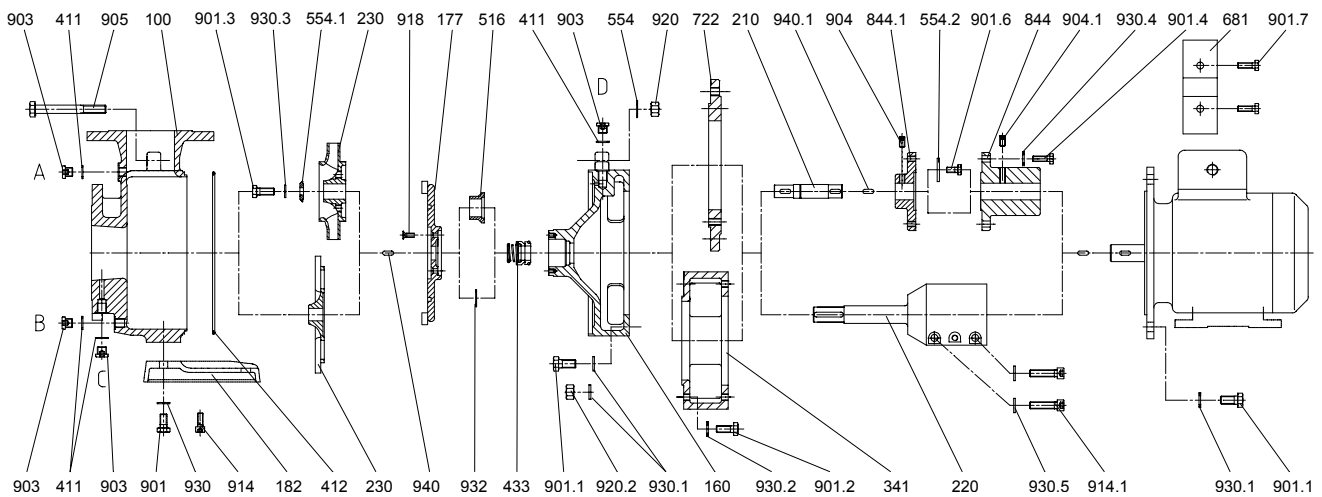
**NUB 300-800 · NUB 32 · NUBC 300-600 · SUB 700**



- A: Screwed plug G1/4 for vent and manometer connection
- B: Screwed plug G1/4 for drain
- C: Screwed plug G1/4 for manometer connection
- D: Screwed plug G1/4 for vent

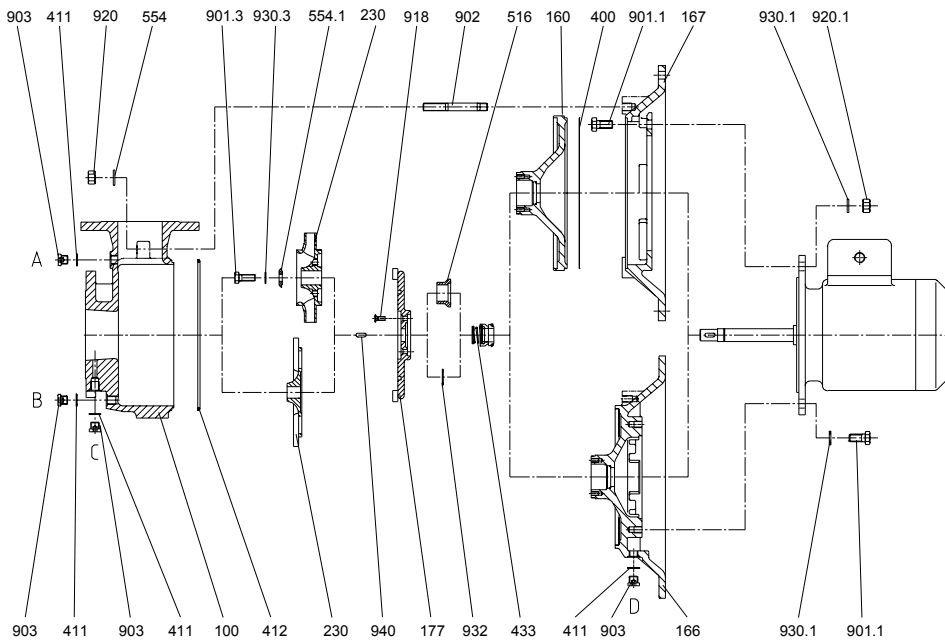
When ordering spare parts, please indicate serial no., type no. and parts no.

**NUBL 300-800**



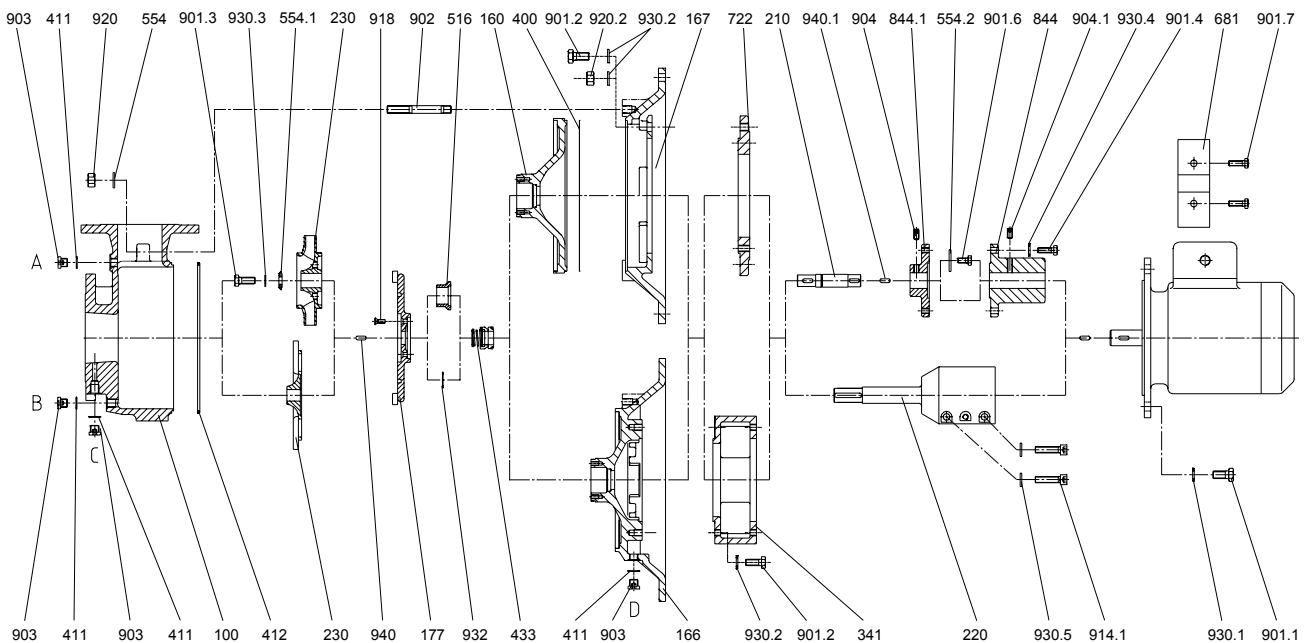
Part no.	Designation	Part no.	Designation	Part no.	Designation
100	casing	412	o ring	904/.1	hexagon socket set screw
160	cover	433	mechanical seal	905	tie bolt
177	sealing chamber	516	shaft sleeve for mech. seal	914/.1	hexagon socket head cap screw
182	foot	554/.1/.2	washer	918	slotted countersunk head screw
210	shaft	681	coupling guard	920/.1/.2	nut
220	stub shaft	722	intermediate flange	930/.1-5	tooth lock washer
230	impeller	844/.1	coupling half	932	circlip
341	lantern	901/.1-.7	hexagon screw	940/.1	key
411	joint ring	903	screwed plug		

**NUBF 300-800 · NUBF 32 · NUBCF 300-600**



- A: Screwed plug G1/4 for vent and manometer connection
- B: Screwed plug G1/4 for drain
- C: Screwed plug G1/4 for manometer connection
- D: Screwed plug G1/4 for leakage drain

**NUBFL 300-800**



Part no.	Designation	Part no.	Designation	Part no.	Designation	Part no.	Designation
100	casing	341	lantern	722	intermediate flange	918	slotted countersunk head screw
160	cover	400	gasket	844/.1	coupling half	920/.2	nut
166	mounting cover	411	joint ring	901/.1-.7	hexagon screw	930/.1-.5	tooth lock washer
167	mounting flange	412	o ring	902	stud	932	circlip
177	sealing chamber	433	mechanical seal	903	screwed plug	940/.1	key
210	shaft	516	shaft sleeve for mech. seal	904/.1	hexagon socket set screw		
220	stub shaft	554/.1/.2	washer	914.1	hexagon socket head cap screw		
230	impeller	681	coupling guard				

When ordering spare parts, please indicate serial no., type no. and parts no.